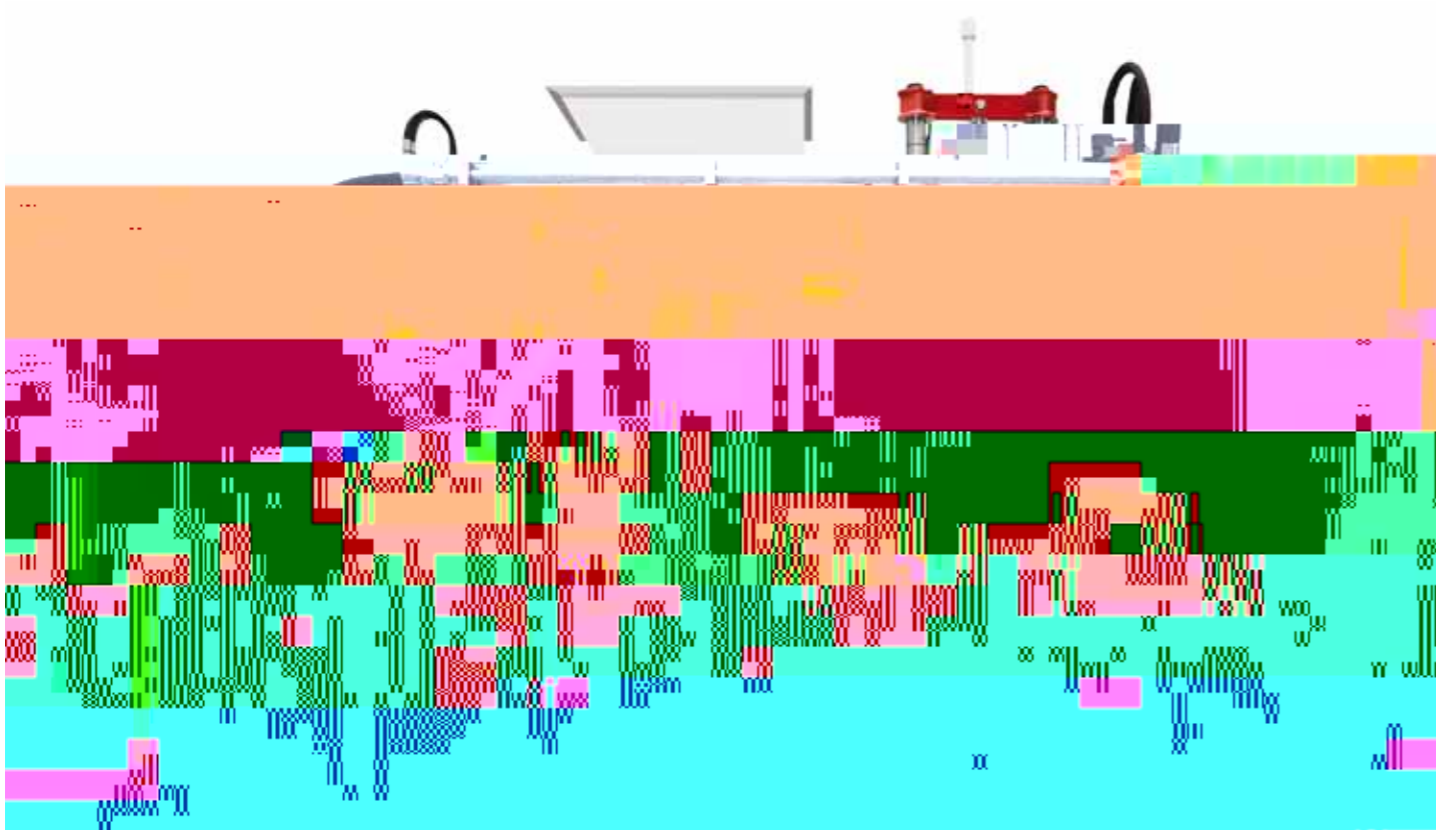


RH 760/780



HESS control system / HESS Production Statistics

HESS Control system.

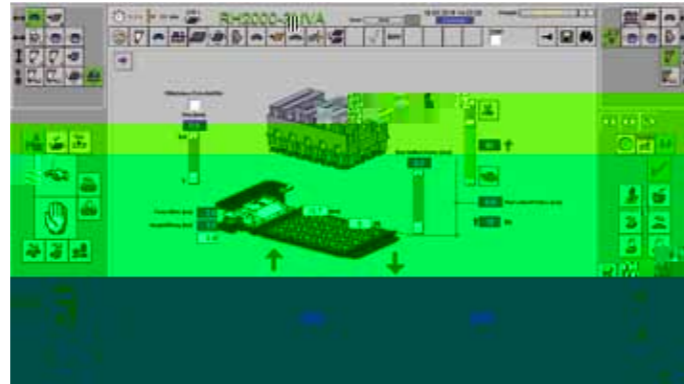
Control Panel adjustable for height and screen angle to match operator's preference or need

User Interface has touched panel clearly arranged with intuitive graphics

Symbolic buttons manage specific parameters to improve understanding within shortest time

Adjusting one parameter automatically and correctly changes corresponding pre-set parameters without further complex input of many parameters

Many adjustments are set by a simple slider to allow newer operators to become familiar with logic and operating knowledge



Visualisation of the mould and tamper head

Further features of operator controls:

Automatic mold change can be supervised by a remote control directly at the machine

Settings for molds and product groups are saved and automatically retrieved

Operator control extends throughout entire plant work centers (Mixing/Batching; Production; Curing; Handling; Treatment; and Packaging)

Hess production statistics 4.0.

It is important for operators and supervisors to have access to critical production data to assess the performance status of the product orders to better serve customers and manage profitability. All relevant information is collected in a Microsoft SQL database is retrievable by authorized managers on their monitors, or remotely via web-based visualization screens.

Features of the HESS Production Statistics:

Multiple facilities can be monitored and evaluated

Data is accessible via mobile devices (smartphones or tablets) anytime and anywhere

Included as standard with new installations. Retrofits are possible

Data for each work center (mixers; production machines; finger cars; curing chambers; splitters; etc.) are collected and tracked

Data is available for import into business system

As the industry demonstrates increasing digitalization of production processes (Industry 4.0) the HESS Production Statistics supports continuous improvement programs and other manufacturing excellence initiatives.

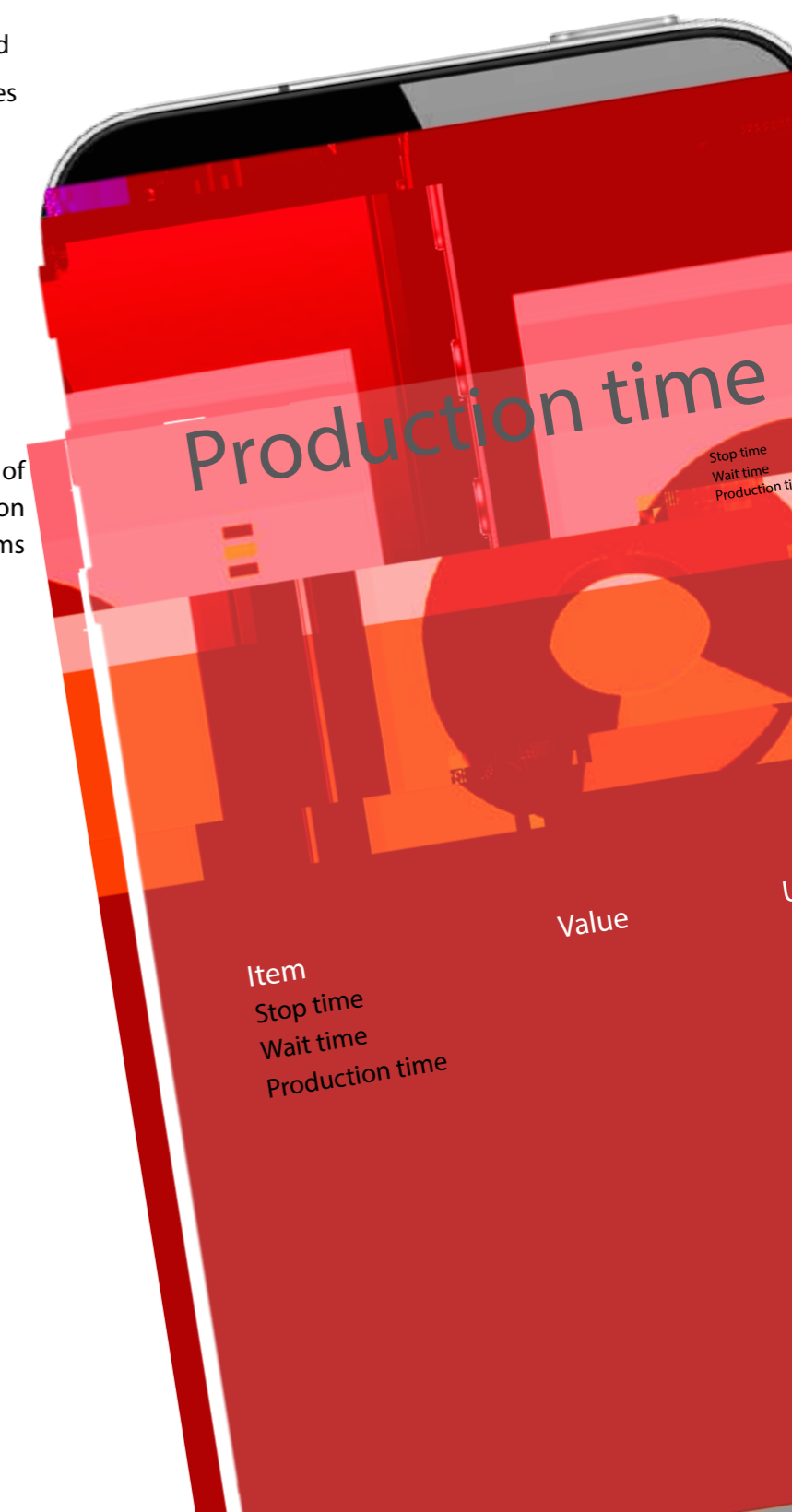
Digital chamber and storage administration

Link to ERP Systems (SAP, Navision, Oracle)

Integration of parametric value data for quality control

Product tracking

Integration into customer-specific order management



-



